



Spilopsyllus cuniculi, female:
entire (A); spermatheca (B);
shown as arrow in A.



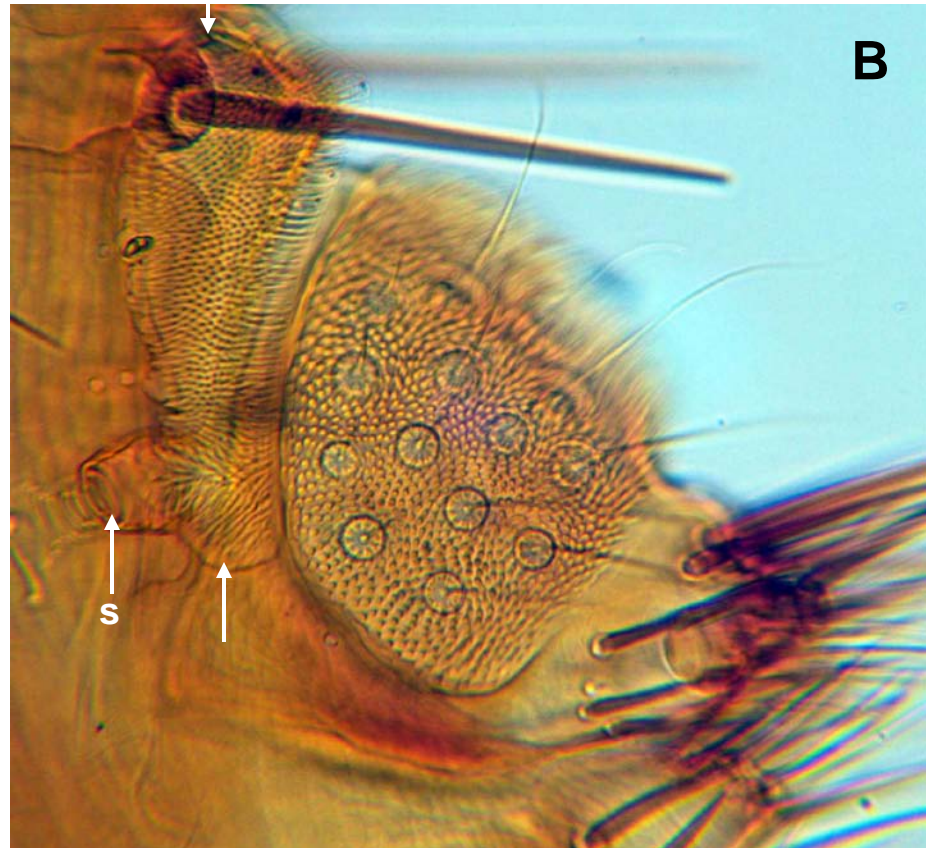


Spilopsyllus cuniculi, male:
entire (A); genitalia (B).





S. cuniculi; genal and pronotal ctenidia (A); sensillum (B). Note very large fossa of spiracular (s) opening (arrows, dorsal and ventral extent of fossa).



S. cuniculi, mouthparts. Legend:
e, eye; ep, epipharynx; lp, labial
palp, m, maxilla, md, mandible;
mp, maxillary palp

